

Welcome to the DCS User Interface Web Page!

Introduction

The DCS User Interface Web Page facilitates individual registration as a DCS user. Once registered, users will be granted access to DCS platform and message data. Secure access controls are implemented for the DCS such that only authorized government DCS personnel and authorized DCS users may access DCS data. All users access DCS data through the web-based application. The web application has the capability to allow DCS users and managers selective access to system features and functions. This includes the ability to view, modify, create and delete individual fields and records within the database according to access privileges established by government DCS administration personnel.

Each type of table and function has rules and roles defined by the user type and enforced by the web application. Access to database tables is selectively controlled such that users may view their own records and modify allowed fields, but have no access to the data of others in the system. If users wish to modify their records or access portions of the system, an active login and password must be in the system.

This web based system also provides NOAA the facility to manage DCS users, again, based on the access privileges established by government DCS personnel. Authorized system administrators manage user access including authorizations and privileges of DCS users.

Navigating these pages is straightforward and intuitive. First time users may want to print this guide as an aid for their initial visit.

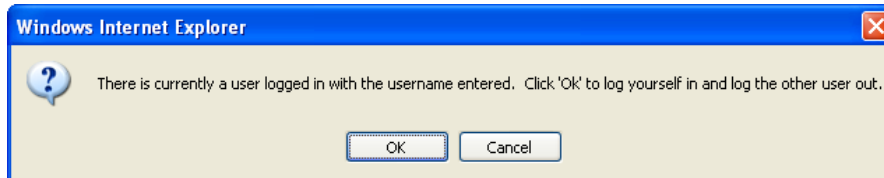
User Registration

After obtaining a System Use Agreement from NOAA, all users of the DCS system must complete and submit a User Registration form. Begin the process by clicking the [Need a login? Click here to register](#) line on the start page. Fill in all the required fields and click [Submit](#) when finished. You will be notified by email when your account has been activated. While registering you will be asked to select a PIN, and to answer a “Hint Question”. Please remember this PIN and your hint question and answer, you will need it if you ever forget your password.

About User Accounts

- Users are uniquely identified by e-mail address. Each account must have a unique email address.
- Each individual user must have an individual user account.
- At least one user for each agency must be identified as the “Master User” or “Group Manager”. Only users with that status may modify PDT or UDT records.
- E-mail is used as a verification and communication method to the user.

- Logins and passwords are validated against password rules. If you forget your password you will need your PIN and the answers to your hint questions in order to obtain a new password.
- Passwords follow NOAA rules for complexity, periodic expiration, and limited reuse.
- A user can only be logged into the system once. If a user does not log out properly, or simply closes his browser and then tries to login again, he will be presented with this warning message:



When logging in, a user is notified that another user is currently logged in with that username. If desired, the active session of the first user is logged out.

- An inactive user is automatically logged off after a warning period. A message is shown after 10 minutes of inactivity. If this message is not acknowledged in 1 minute, the user will be automatically logged off.

User Login

After you receive an email indicating your account has been activated you may begin using the system. Enter your email address and password in the space indicated and click Login.

If you have forgotten your password you can click the Forgotten Password link. You will then be asked for your email address and for correct answers to your hint question. When you have answered those questions satisfactorily you will be emailed the first part of a new password. To make a complete password you must append your PIN to the partial password. As soon as you login with your newly constructed password you will be required to change your password once again.

Home Page

Once you have successfully logged on you will be presented with the web server Home page. On the Home page, in the upper right hand corner, you will see your name, your access level, and a Logout button. Also in the right corner you will be presented with two or more tabs. The tabs allow viewing of Message data, Platform data, and with proper privileges, an Administrative data.

Self Edit

Click on your name in the upper right corner to edit your personal information including your password, PIN, and hint questions. Click the Update User button when you are through.

Message Data

Click on the Message Data tab to view message data stored in the 30-day archive. On the message viewer page you can filter the data to limit your view to data with certain characteristic, you can save views of filtered data, and you can sort each column of presented data in ascending or descending order. Clicking on the Plus sign on the left end of the message row will display the entire message rather than the truncated view show in the rightmost column. The message page provides read-only information. Message data cannot be changed.

There are page navigation tools at the bottom of the page. On the bottom left are change page arrows to increment or decrement the selected page. A Change page box will take you to any of the numbered pages. The Page size box lets you set the number of lines per displayed page. The number of available pages and your current page is shown on the bottom right.

Filtering and Sorting displayed Message data

Message data is contained in a 30-day archive. Sorting the entire 30-day archive takes some amount of time. Generally you will want to filter the message data for specific platforms or other characteristics before using the sort capabilities. Click on the add/edit filters button on the top right side of the message data box. This brings up a filter dialog box. The first line of the dialog box says “Select records where all of the following apply “. You can change “all” to “any”. Click the [Click here to add new condition] line to select various message parameters on which to filter. Clicking the [Click here to add new condition] line displays the word Message. Move your mouse over the word Message to bring up a list of parameters on which to sort. Add as many filter parameters as you wish. When you are ready to view your selected data, click Filter Results in the upper right corner of the Filters dialog box. If the filter you have just created is one you expect to use often, you may save the filter for use the next time you logon. In the upper right corner of the message box, click save current filter. You will be presented with a dialog box to name the filter you want to save. Enter a name and click the Save box. Notice that the named filter is now displayed in the Current View box in the upper left corner of the message data box. The Current View box has a pull-down menu list of all of your saved filters. Click the filter you want to use and then click the Load button to change to another filter. To remove a filter from your stored list, load it in your Current View, and then click delete current view in the upper right corner of the message box. You can further order the displayed date by clicking the column header for each data field. Clicking the column header will change the data order from as-stored to descending order, then to ascending order and then back to as-stored.

Platform Data

Clicking the Platform tab on the main page will bring up the platform data page. On the platform data page you can add/edit filters and sort platform data similar to the capabilities on the message data page. Additionally, depending on your assigned

privileges, you can add and/or edit platform data and submit files for batch platform updates.

Edit Platform Data

On the displayed platform data page, click on any of the platform addresses in the platform address column. This action will bring up a View Platform box. The platform data page shows the platform address and its assigned group with remaining data presented under three additional tabs. Depending on your privileges, you may make changes on this screen. Click Save PDT when your updates are complete.

PDT Filters

In the upper right corner of the PDT data page, click the add/edit filters button. This brings up a Filters dialog box for the PDT data. The first line of the dialog box says “Select records where all of the following apply “. You can click to change “all” to “any”. Click the [Click here to add new condition] line to select various PDT parameters on which to filter. Clicking the [Click here to add new condition] line displays the word Platform. Move your mouse over the word Platform to bring up a list of parameters on which to sort. Add as many filter parameters as you wish. When you are ready to view your selected PDT data, click Filter Results in the upper right corner of the Filters dialog box. To remove the current filter and return to the full PDT view, click Clear filters in the upper right corner of the PDT box. You can further order the displayed PDT data by clicking the column header for each data field. Clicking the column header will change the data order from as-stored to descending order, then to ascending order and then back to as-stored.

Add a new PDT

ONLY the NOAA system manager may add new PDT's. To add a new PDT simply click on the add single PDT button in the upper right corner of the PDT page. Fill in the necessary fields then click Save PDT.

PDT Batch Updates

Batch up dates may be made to add new platforms (only NOAA manager) or update information for existing platforms. Clicking on the batch updates button on the PDT pages brings up the Batch Updates dialog box. The first tab presented is the Batch Update Status tab. In this view you see information about batch jobs you have submitted. To submit a batch job click the Create a Batch Job tab. Select the batch file script containing the add or update information you want to submit. Clicking Select lets you browse your computer for the desired text file. Once selected, click Submit to begin the batch process. Following are sample ADD and UPDATE script files

```
ADD PDT 11111111 &  
OWNER_ID = USGS01 &
```

```

PRIME_TYPE = S SECND_TYPE = R &
PRIME_CHAN = 164 SECND_CHAN = 130 &
PRIME_SCID = W SECND_SCID = W &
MAX_RETRIES = 03 &
FIRST_XMT = 004810 &
XMT_PERIOD = 010000 &
XMT_WINDOW = 0010 &
XMT_RATE = 0300 &
DATA_FORMAT = A &
PRIME_PREAMBLE = S &
SEASON_ID = N &
NMC_FLAG = Y &
NMC_DESCRIPTOR = SRXX20 &
CATEGORY = L &
ASSIGN_DATE = 20030402 &
MANUFACTR_ID= "FTS " &
MODEL_NO= "G5" &
END

```

```

UPDATE PDT 11111111 &
OWNER_ID = USGS01 &
DATA_FORMAT = "A" &
PRIME_PREAMBLE = "S" &
SECND_PREAMBLE = "S" &
LOC_CODE = "CA" &
LOC_REGION = "A" &
LOC_NAME = "Pilot Cr abv Stumpy Meadows Lake" &
LATITUDE = 385341 &
LONGITUDE = -1203402 &
MIN_ELEVATION = 5 &
CATEGORY = "L" &
MANUFACTR_ID = "SIGNAL ENG." &
MODEL_NO = "SE1200" &
SEASON_ID = "N" &
DATE_DEPLOY = 20080522 &
PMANT_NAME = "Paul Honeywell" &
PMANT_PHONE = "530-546-0187" &
SHEF_CODE1 = "HG" &
SHEF_CODE2 = "EC" &
SHEF_CODE3 = "VB" &
MANUFACTR_ID= "FTS " &
MODEL_NO= "G5" &
FIRST_XMT="001515" &
XMT_PERIOD="020000" &
XMT_WINDOW="0020" &
XMT_RATE="100" &
END

```

Administrative Data

If you have been authorized some level of administrative privileges your home page will contain an [Admin](#) tab. Clicking the [Admin](#) tab will bring up data about the system users. As with the message and PDT pages, Admin data may be sorted by clicking on the column headers to sort ascending, descending or as-stored. The Status column shows the

status of each account as either Active or Deactive. Clicking on the displayed status for an individual can change his status. Clicking on the status for an individual will bring up a confirmation box. Click OK to change the individual's account status. Click Cancel to abort the status change.

Clicking Select an Action for an individual displays a pull-down with all or some of the following choices: edit, reset password, delete, expire password, clear password history. Again, the choices displayed depend on the privilege level assigned to you. The reset password, expire password and clear password history selections were developed for test purposes, are self explanatory in function, and are not part of a normal admin function.

Delete User

ONLY NOAA manager may delete a user. In the select an action pull-down, click delete. A confirmation box will be presented. Click OK to delete the user. Click cancel to abort the delete action.

Edit User

In the select an action pull-down, click edit. You will be presented with the Edit User dialog box. You may make changes to the user information presented. Depending on your privilege level, you may be able to change his user group assignment and his system role/privilege level. Note that the user password, PIN and hint questions are not displayed and cannot be changed. When updates are completed, click the Update User button.